

PLASMONX

ACCELERAZIONE AD ALTO GRADIENTE IN PLASMI-LASER E PRODUZIONE DI RAGGI X MONOCROMATICI

Danilo Giulietti

Dipartimento di Fisica dell'Università and Sezione INFN di Pisa, Italy.

Intense Laser Irradiation Laboratory - IPCF CNR - Pisa.



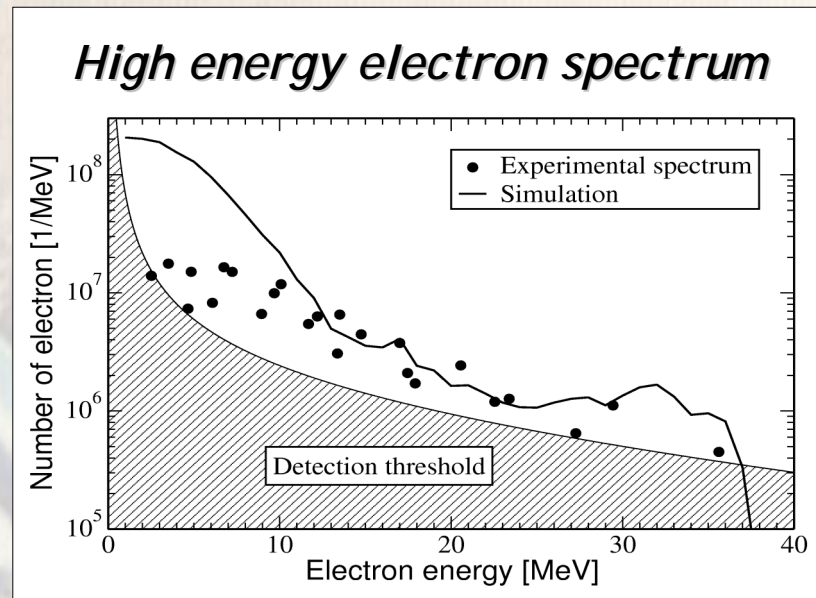
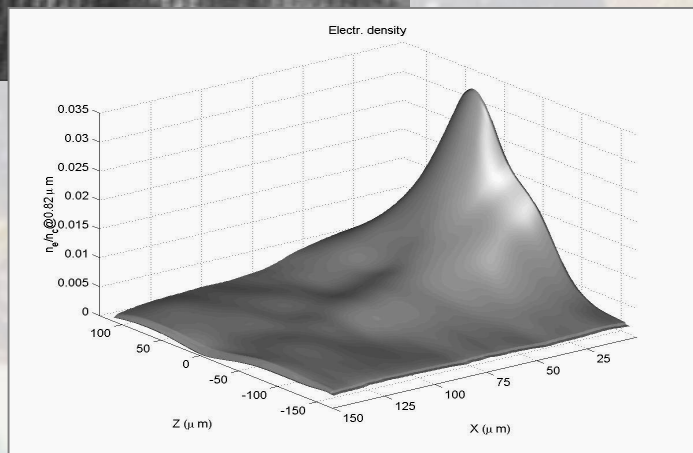
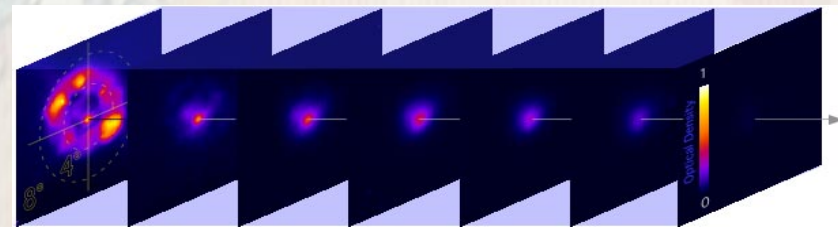
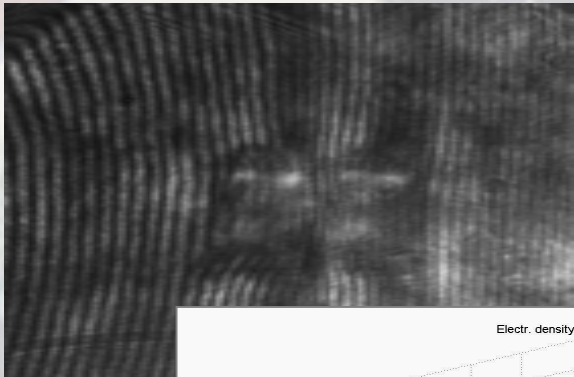
Università degli Studi di Pisa



INAUGURAZIONE DOTTORATO Pisa, 27 Gennaio 2005, Danilo Giulietti

PRODUZIONE DI ELETTRONI ENERGETICI

Quasi-resonant LWFA has been shown in CPA laser (35 fs, 10^{20} W/cm²) interaction with ASE-driven exploding foil plasma



PROSPETTIVE: INIEZIONE CONTROLLATA

Controlled injection of electrons in Langmuir waves: a compact way of producing monoenergetic electron bunches (from an original idea of S. Bulanov et al PRL 1998)

